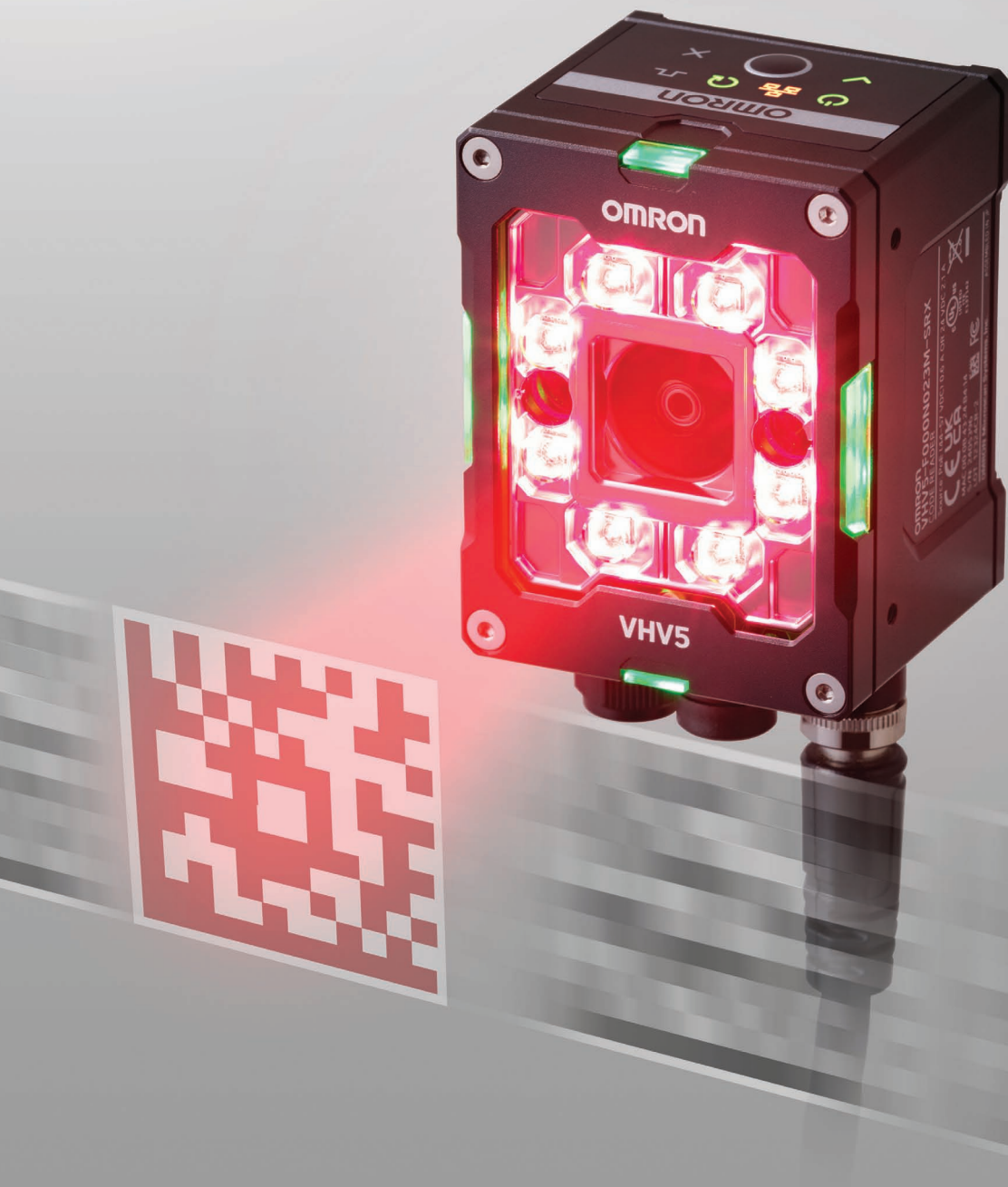


Auto-Focus Multi-Code Reader
VHV5-F

OMRON

Ultra-High Performance Intelligent Barcode Reader



Any Code. Any Application. Any Operator. Any Production Line.



Introducing the Next Generation in Code Reading

Introducing the next generation VHV5 Code Reader designed to meet the diverse needs of multiple industries. With its advanced front-end imaging system, new X-Mode 6.0 decode algorithm, and powerful multi-core processing subsystem, the VHV5 is engineered to handle everything from the highest speed labeling lines, to the most complex direct part mark reading applications right out of the box.

The VHV5 is Ideal for any industry: Food, Beverage & Commodities, Automotive/EV, Logistics Automation, Electronics, White Goods, High-Speed Printing, and Document Handling. The VHV5 Code Reader delivers unparalleled performance and reliability for any code, any application, any operator, or any production line.



Any Code

X-Mode 6.0 Out of the Box Reading	P.4
Smart Assist	P.5
Optimize	P.6
Readability Score (0-99)	P.7
Built-in ISO Code Quality Verification Tools	P.7



Any Application

Maximum Versatility for Any Application	P.8
Target Application Industries/Markets	P.9
Multiple Configurations	P.10
IP Rating	P.12
Flexible Mounting	P.12
Multiple Communication Options	P.12
Image Front End Lighting and Filtering Options	P.13
Pipeline Acquisition and Parallel Processing	P.14



Any Operator

OMRON Weblink	P.16
User Experience	P.17
Device View - Settings Menu	P.18
Image Setup	P.19
Learn All Codes	P.20
Dashboard View	P.21



Any Production Line

Part of Any Automation Solution	P.22
Interactive Setup Mode for Programming and System Tuning	P.23
Digital Softscope for Optimization Visualization	P.24

Any Code



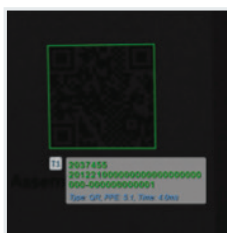
X-Mode 6.0 Out of the Box Reading – No Tuning Required

The new **X-Mode 6.0** algorithm just reads. All standard 1D and 2D barcode printed labels and direct part marks are effortlessly read by the OMRON X-Mode 6.0 algorithm right out of the box – no special settings, operator intervention or tuning required.

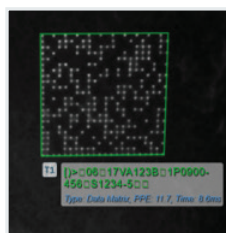
Examples of Standard X-Mode 6.0 Reading Capability



Labels



Under Exposed



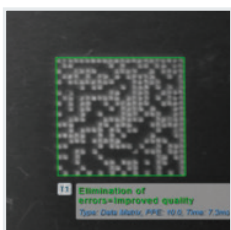
Under Printed



Linear Distortion



Damage



Direct Part Marks



Over Exposed



Overprinted



Non-Linear Distortion



Spurious Light Reflections

Any Code



Optimize

Optimize is an alternative to Smart Assist used when a line is set up to run just a single part type. Optimize delivers the same decoding power as Smart Assist, while at the same time it maximizes decoding speed and minimizes decode time variation from part to part. This allows the production line to be triggered at the fastest possible rate.

Typical optimize routines are trained during setup on a single part. The “optimize solution” they produce is based solely on just one example of the way the code appears. The VHV5 optimize routine however can be trained on a sample set of up to 7 images pulled from the running line. This larger sample set better represents the true variation in the way codes will appear during production due to normal changes in part position, lighting, marking, code quality and other factors. The VHV5 “optimize solution” calculated from this larger image set is far more robust

Optimization in Action:

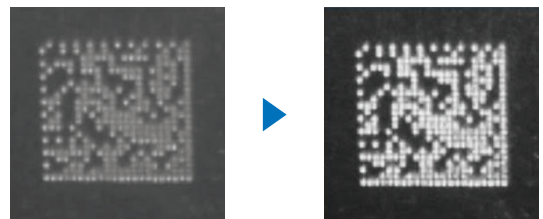
Training

The Optimization training routine pulls the set of test images from the running line and stores them away. It then iterates through all images, systematically changing key parameters and image preprocessing combinations to find the best solution for the entire group. The best solution is the one that separates the foreground and background code cells into tight groupings with a clearly defined threshold between them.

Runtime

During runtime, the effect is that codes are:

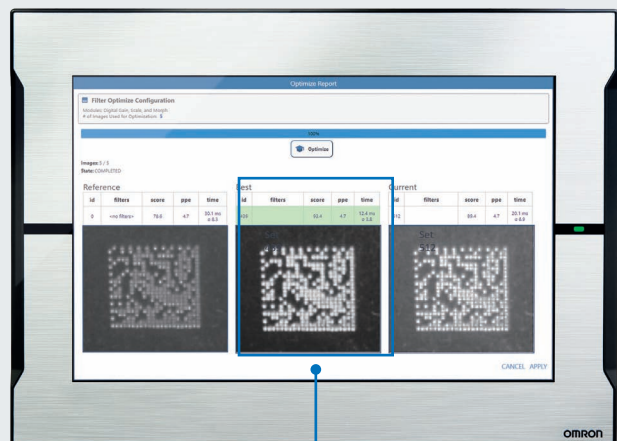
- Easier to locate within the image
- Easier to decode
- Read times are very fast
- Read times are very consistent



Optimize Reading Real-World Variations Right out of the Box



Input - Sample Images pulled from the running line



Output – Best filter and parameter set that creates clearest image of the barcode

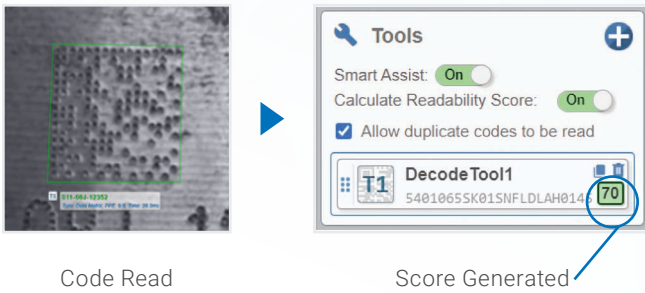
Any Code



Readability Score (0-99)

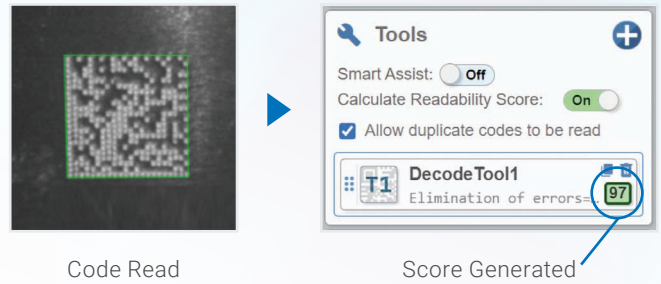
The Readability Score directly reflects the quality of the code, and the ease with which the algorithm can locate and decode it. The score is continuously calculated and output during normal operation. The score is very useful during setup to help choose the correct lighting. It is, also very useful during runtime to help identify and correct marking problems before they become a production issue.

How Readability Score Works:



Code Read

Score Generated



Code Read

Score Generated

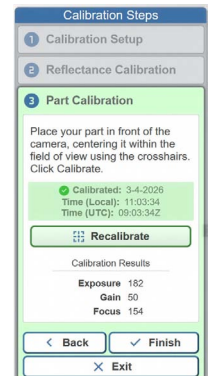
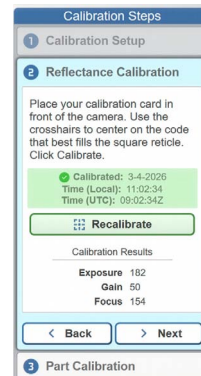
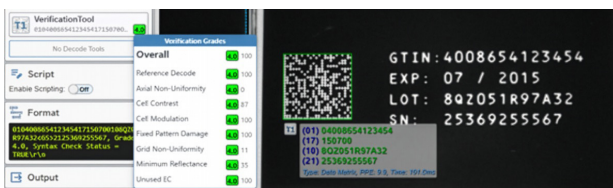
Example: Low Readability Score of 70 indicating poor code image quality

Example: High Readability Score of 97 indicating high code image quality

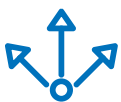


Code Quality Verification

The VHV5-F is available as an inline barcode verifier designed to deliver real-time, standards-based verification and GS1 format validation directly on the production line. Verification accuracy is ensured by using a standardized calibration card and an intuitive web-based calibration wizard. Built in support for ISO Tilted Coaxial Lighting (TLC), perspective- and light correction allows the VHV5 to measure quality accurately under typical manufacturing conditions. The VHV5 can also connect to- and drive external ISO standard-lighting, if required.



Any Application



VHV5 - Maximum Versatility for Any Industrial Application

- **IP69K Packaging:** Offers the highest available IP Rating for installation in any industrial environment.
- **Flexible Mounting Options:** Adapt to various setups with ease.
- **Optical Flexibility:** Choose from clear window, diffuser, polarizer, and half-polarizer options to enhance image clarity.
- **Wide Autofocus Range:** The choice of four different liquid lenses and two sensor resolutions provides maximum flexibility to match the camera to the exact optical and mechanical requirements of the application.
- **Ultra High Power Lighting:** Red and white lighting perfect for stop-motion, wide area, and long-range imaging.
- **Ready-to-Use Algorithms:** Automatically reads all barcode types out-of-the-box, including single or multiple codes, and performs well with both low-quality direct part marks and high-contrast labels.
- **High-Speed Performance:** Multi-core processing and advanced algorithms ensure up to 4000 parts per minute, with the fastest, most consistent reads even for challenging Direct Part Marks.
- **Flexible Connectivity and Networking Options:** The VHV5 offers a variety of high-speed networking options for integrations into modern assembly lines as well as legacy connectivity options such as serial communications and digital I/O.

Any Application



VHV5 Target Application Industries/Markets

The VHV5 has been designed for use across a broad array of industries, each with their own sets of unique requirements and customer pain points. The VHV5 has the built in capabilities to tackle both the simple and the most challenging applications where traceability is a critical requirement



Food, Beverage & Commodities Packaging

- High line rates and part speed
- Shiny labels on curved or wrinkled packages



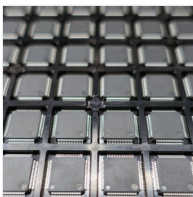
Automotive/EV

- Camera at long distance outside of automation envelope
- Variable quality direct part marks on metal, curved surfaces or in cavities



Logistics Automation

- Large depth of field, long distance reading
- Various code types anywhere in field of view



Electronics

- Wide Field of View Reading of high-density codes
- Laser marked on ICs or PCBs



White Goods/Appliances

- Long distance reading
- One code one output as appliance sits in station



High Speed Printing & Document Handling

- Highest speed reading and verifying
- Multiple codes across a web



Any Application



Multiple Configurations

The versatility starts with 6 standard models derived from a combination of two different sensors, and three different focal length, high speed AutoFocus lenses.

The **8 combinations** allow the user to pick exactly the right reader model that matches the application requirements.

THE RIGHT READER FOR ANY APPLICATION

8

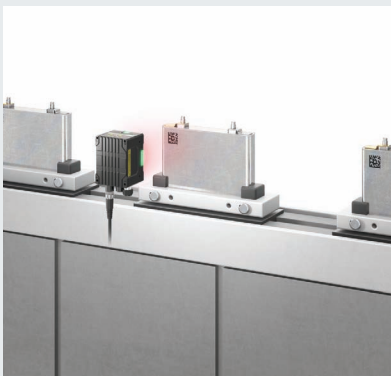
CONFIGURATIONS

2 Different Sensors

4 Different Focal Lengths



The 8 combinations allow the user to pick exactly the right camera model that matches the application requirements in terms of field of view, camera standoff, and the required resolution to read the designated code size.



Any Application

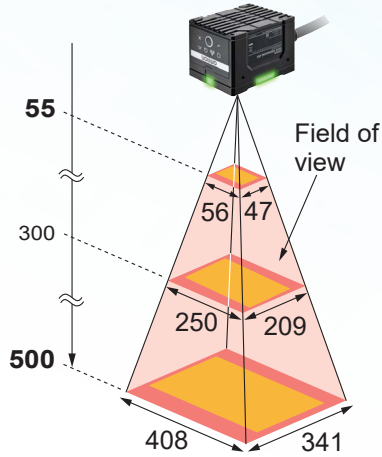


Multiple Configurations

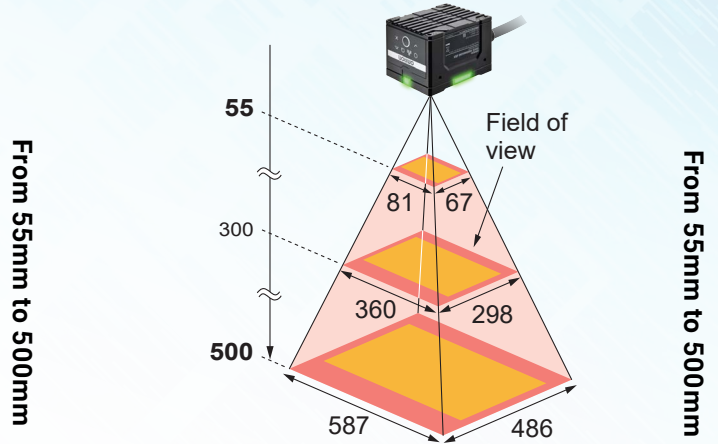
5 MP View Range

2.3 MP View Range

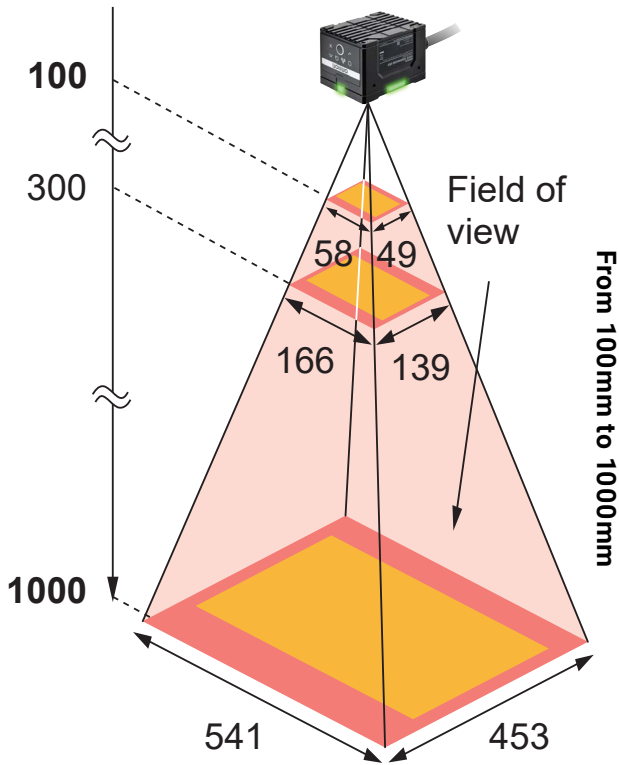
Medium Lens



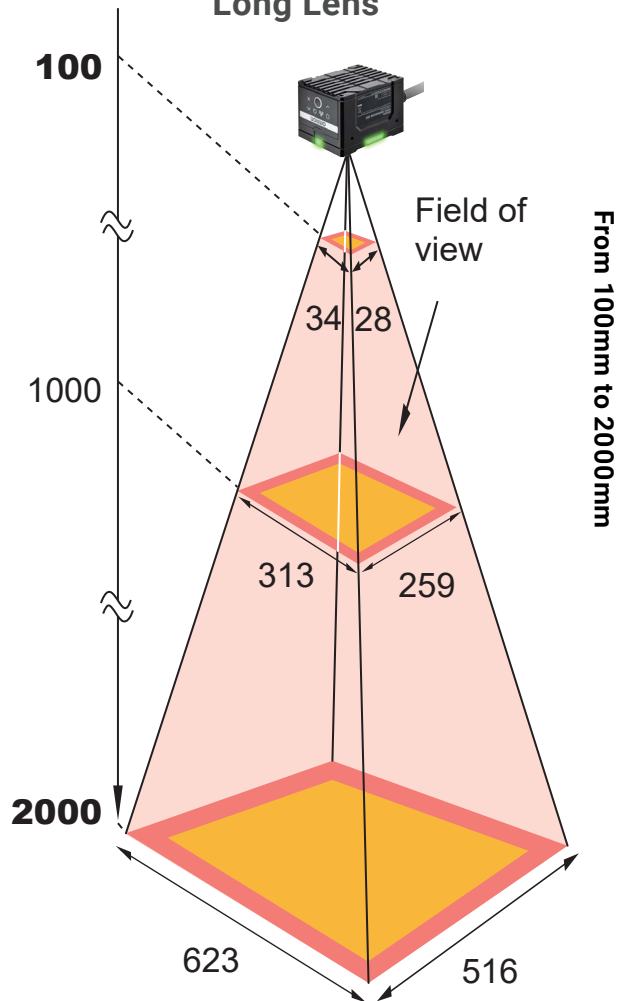
Wide Lens



Narrow Lens



Long Lens



Any Application



IP Rating



The VHV5 is IP69K rated. This is the highest IP device rating available for protection against dust and water. This means **the VHV5 can be installed in virtually any industrial environment** no matter how harsh.

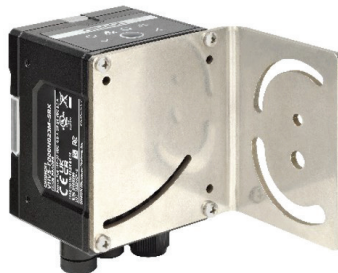


Flexible Mounting

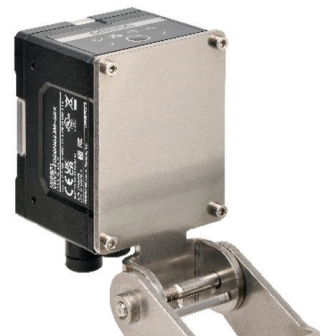
The VHV5 offers **Multiple options for direct mounting** using mounting holes either on the side or back of the unit, or by using 1 of 3 highly flexible mounting options designed specifically for the camera.



Universal Mounting
Block and Heatsink



Bracket Adjustable
Angle Mount



Pan and
Tilt Camera Mount



Multiple Communication Options

The three connectors on the bottom of the camera allow the user the choice of programming and control through 1000 BaseT (PoE) TCP/IP, EtherNet/IP, PROFINET, or through a combination of the above. **This allows the VHV5 to be integrated into the most modern assembly lines**, as well as the legacy lines using serial communications or digital IO.

Any Application



Imaging Front End Lighting and Filtering Options

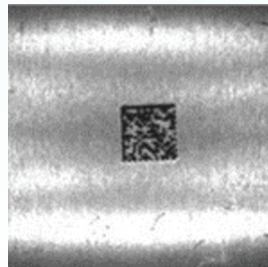
The VHV5 lighting is 15x brighter than the previous generation camera lighting. This allows the camera to operate **from 50 mm to over 2000 mm, evenly illuminating the entire field of view** with no motion blur using just the integrated light. Most products in its class require multiple external lights to achieve the same results.



NG Conventional Code Readers



Motion Blur



Lighting Artifacts

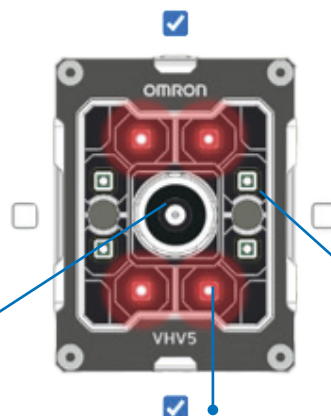


Glare



OK VHV5

The camera's ultra-bright strobe lighting can be accessorized with a Diffuser, Polarizer, or Half Polarizer which gives the user very powerful options to create clean, high contrast images of the barcode, further enhancing the VHV5 versatility to image parts of all types.



High Power Strobe –
Eliminates Blur



Diffuser – Smooths out
lighting artifacts

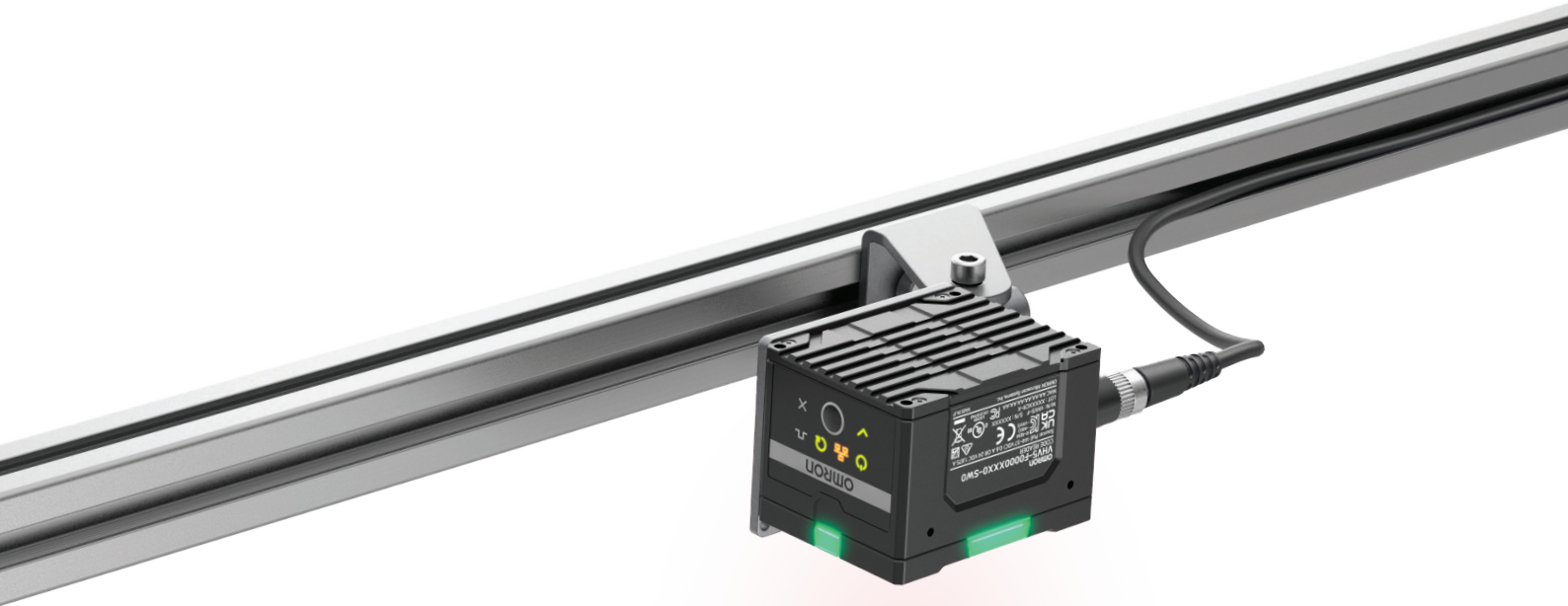


Polarizer –
Eliminates glare

Any Application



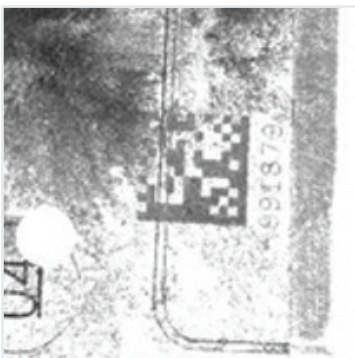
Power - Pipeline Acquisition and Parallel Processing



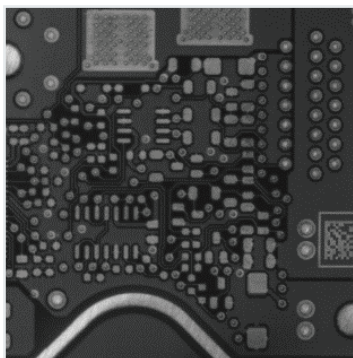
The most important aspect of the VHV5 is the processing power that it can deliver. The combination of High Speed Sensor, Pipelined Acquisition and Multi-Core Processing leads to robust, **non-stop reading on lines at rates of up to 4000 parts per minute.**

The processing power can be applied to more than just speed however. It can be applied to:

- Achieving the highest decoding rate for the most difficult to read parts
- Finding and reading codes in very complex and cluttered scenes
- Reading multiple codes, or large arrays of codes in one image
- High rates when using Smart Assist
- Acquiring multiple images over time or distance to find any and all codes that are within them



Difficult Reading



Cluttered Scene



Array of Parts

Any Application

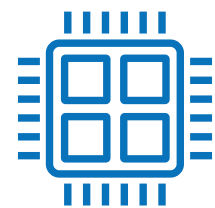
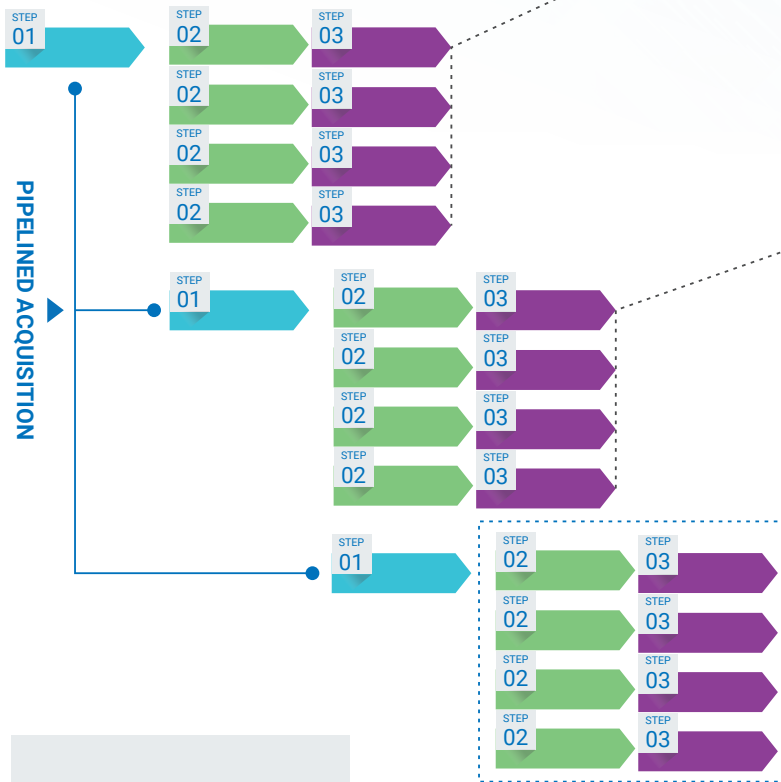


Power - Pipeline Acquisition and Parallel Processing

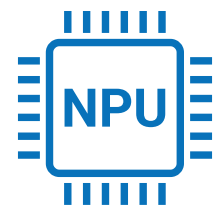
Serial Code Reader Processing Model



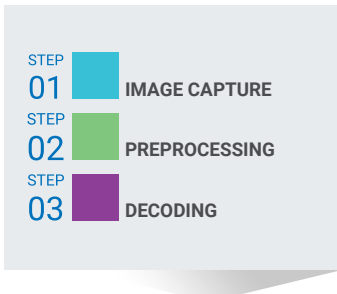
NEW VHV5 Parallel Processing Model



Quad Core CPU



NPU



Realtime Processing. No Errors.

# of Cycles Passed	# of Cycles Failed	Parts Per Minute
100346	0	4024

With the VHV5, true frame rate processing speeds is possible

Any Operator

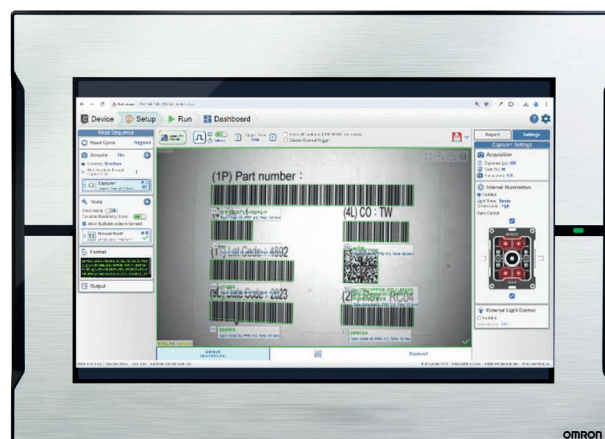


OMRON WebLink

Omron WebLink is a modern Web Based UI, hosted by a Web Server running on the VHV5. The user simply types the IP Address of the reader into any browser to launch the programming and runtime monitoring user interface.

Because the UI and the Reader Application are both installed on the reader, there will never be an issue with version mismatch between a UI which normally runs on a PC, and the code reader firmware.

WebLink provides a simple and intuitive, yet extremely capable User Experience. The UI allows the user to completely manage the device, and to create, test, run and monitor reading applications. High level functions, tools and advanced visualization are available throughout the UI to automate or guide the user through the setup process.



Any Operator



UX Experience

Guided Setup



WebLink has four main views or modes that guide the user through the stages of setting up the reader, programming new reading applications, and monitoring the code reader while running on the production line.

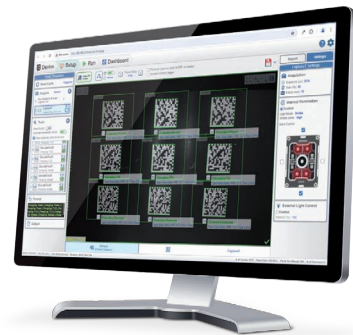
Four Main Views

Device View



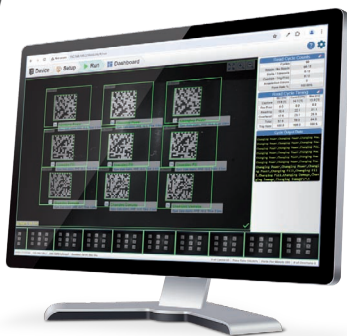
Initial setup of reader communication parameters.

Setup View



Setup and test reading jobs.

Runtime View



Monitor images and results

Dashboard View



"At a Glance" Monitoring of image, device, job and runtime status

Any Operator

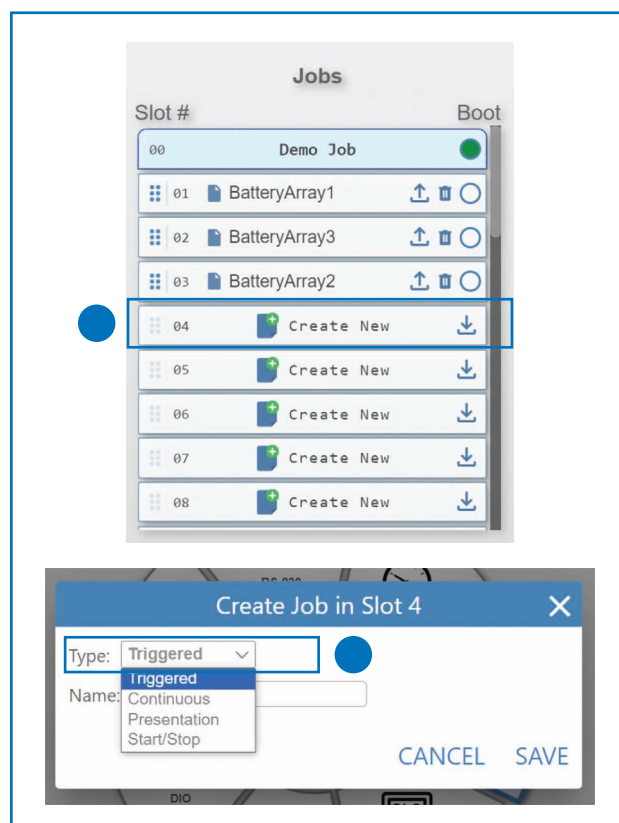
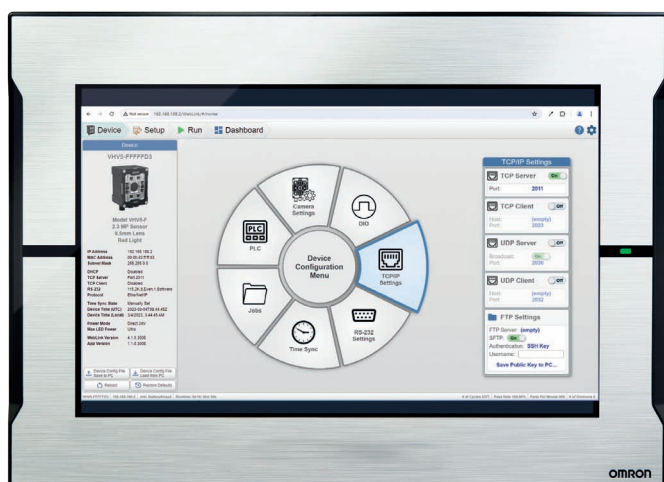


Device View – Settings Menu

The Device view serves two main purposes, to setup the Device hardware, and to create and manage Reading Jobs.

Device Setup

Device View is used to modify the hardware configuration of the VHV5. Primarily this involves selecting the various communication channels, TCP/IP, EtherNet/IP, PROFINET, RS-232 and Digital IO, that the reader will use to communicate with other automation on the production line. The user can also synchronize the reader with a Master Clock on the Factory Floor.



Job Management

The Jobs entry on the wheel calls up the Jobs dialog. This control is used to create new, and to manage existing reading applications called Jobs.

On Create New, the user specifies one of the 4 standard job types most commonly used in industry. These are Triggered, Continuous Read, Presentation Mode, or Start/Stop. Default settings allow these jobs to be deployed as is, or with very little change.

Each Job is stored in 1 of 32 memory slots in camera. Job can be swapped nearly instantly from trigger to trigger. Jobs can be archived to and from a PC for backup and for sharing across multiple code Readers.

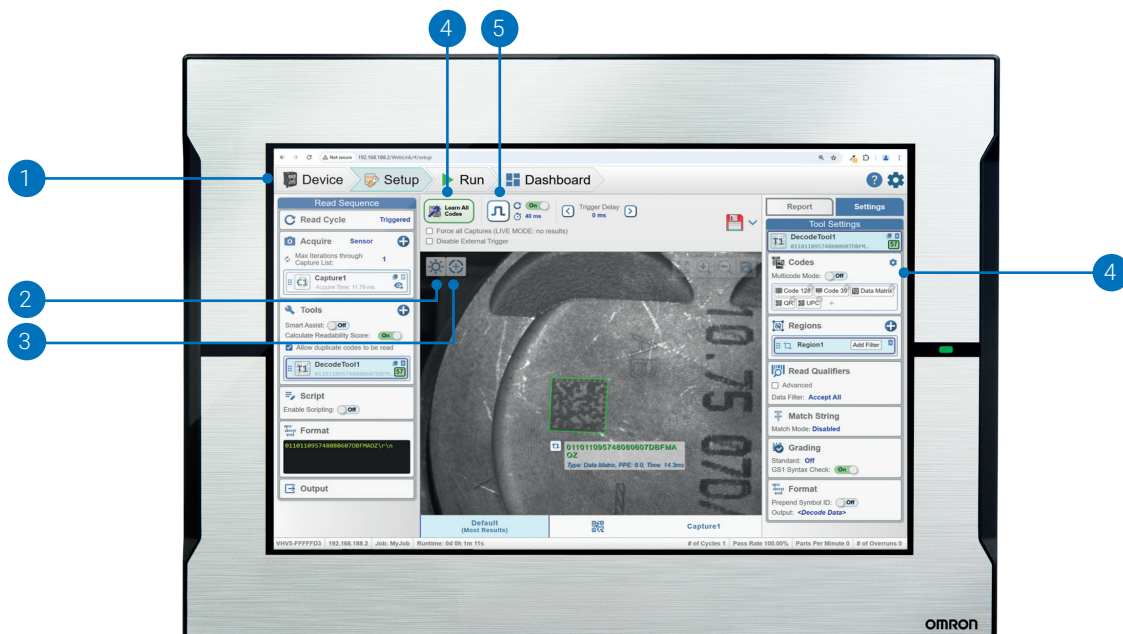
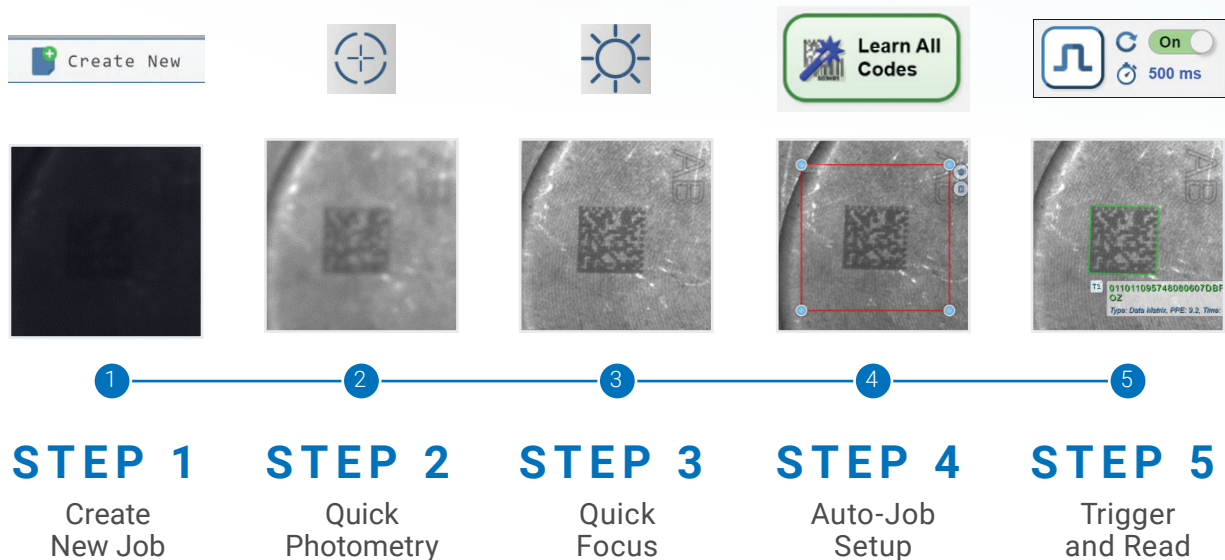
Any Operator



Image Setup - Quick Photometry, Focus, Virtual Trigger

New Jobs created in the Device View are programmed in the Setup View. All Jobs have steps to **Acquire Images**, to **Run Decoding** on those images, and then to **Format and Output the Read Data**. Simple to use High Level functions within Setup View can be used set up each of these steps automatically for the user.

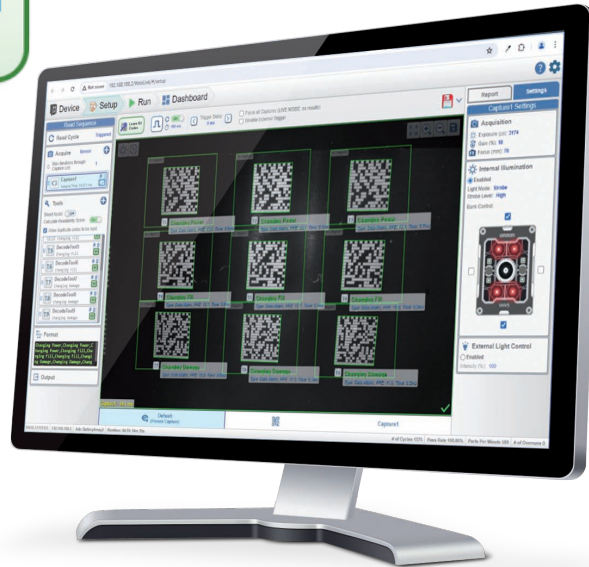
1. **New Jobs** are created in the Device View
2. **Quick Photometry** automatically determines the ideal exposure and gain for the image
3. **Quick Focus** automatically determines and sets the ideal autofocus distance
4. The default Decode Tool is set to read a single code of any type out of the box. If there are multiple codes to be read, **Learn All Codes** automatically adds and set up all additional Decode Tools for the user.
5. The **Virtual Trigger** allows the job to be tested "live" in setup. It simulates the trigger rate of the production line, and along with the Digital Softscope, allows the user to test the code reading application under full stress.
6. Once satisfied with the job, the system can be put online and monitored with either the **Run or Dashboard View**.



Any Operator



Learn All Codes



Learn All Codes is a powerful user shortcut designed to simplify the setup of complex reading jobs involving multiple codes in the field of view.

When executed, Learn All Codes automatically detects all the codes in the image and adds a Decode Tool for each one into the job. It then sets key parameters and defines a unique search region (ROI) for each code based on its position in the image, sized to accommodate the expected positional variation of the part during runtime.

Unlike other readers that require manually adding tools, drawing individual search regions, and configuring parameters, Learn All Codes handles these tasks automatically. This reduces the time needed to create complex jobs from minutes to seconds

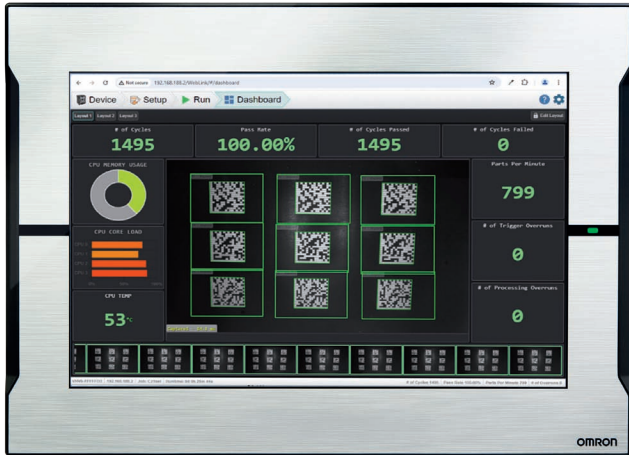
Result of Learn

- Tools arranged in reading order
- ROIs (Regions of Interest) so each code can be read uniquely
- ROI sized to accommodate the expected positional uncertainty of the part as it runs on the line.

Any Operator



Dashboard View



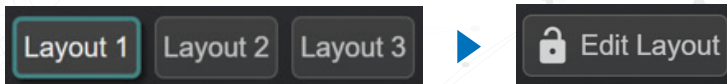
The Dashboard is a new configurable WebLink runtime view.

It displays images and key data that can be digested in a single glance.

- Main Read Cycle Statistics showing how many parts have run and the read rate.
- Central real-time image display showing read graphics
- Historical Image Filmstrip
- Errors and Warnings
- CPU Operation Stats

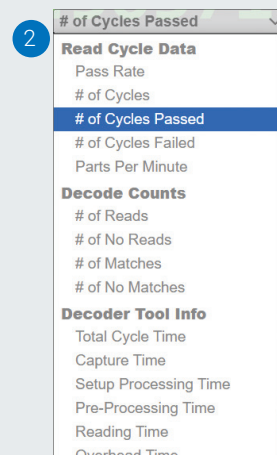
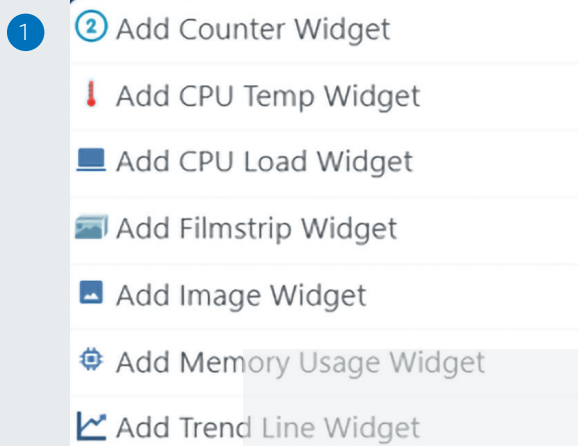
The Dashboard View can be programmed by the customer to display 1 of 3 Layouts appropriate for different levels of users

3 Different layout options

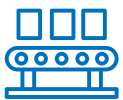


The Edit Layout function allows the user to add and arrange Widgets into and of the 5 main sections or the Dashboard view. It can also:

- 1 Choose widget type
- 2 Choose data to display in Widget



Any Production Line



Part of Any Automation Solution

The VHV5 offers numerous tools and capabilities that make installation, programming and testing of the reader a simple and straight forward task

A full suite of communication options to integrate VHV5 on any line

- TCP/IP – TCP and UDP (both Client and Server models)
- RS-232
- Digital IO
- EtherNet/IP and PROFINET

Simplified PLC Communication

- The VHV5 has one single set of straight forward Input and Output Assemblies used for both EtherNet/IP and PROFINET
- The product is offered with a set of predefined Function Blocks that automate most common operations such as triggering and receiving results



Function Blocks



EtherNet/IP

Any Production Line



Interactive Setup Mode for Programming and System Tuning

- The camera operates at the same performance level in Setup Mode as it does in Run Mode. This allows jobs to be fully set up, characterized and optimized prior to putting them online
- All job and parameters settings made by the user take effect at the next trigger. There is no need to download intermediate job changes to the camera. Programming changes can be seen and evaluated immediately
- Setup Mode offers a built in Trigger Generator for accurate simulation of the reader running on the production line
- Setup Mode provides near real-time image updates, as well as data rich reporting for performance analysis and read cycle tuning

Read Cycle Counts	
Cycles	777
Reads / No Reads	777 / 0
Stalls / Timeouts	0 / 0
Overrun - Trig/Proc	0 / 0
Acquisition Errors	0
Pass Rate %	100.00%

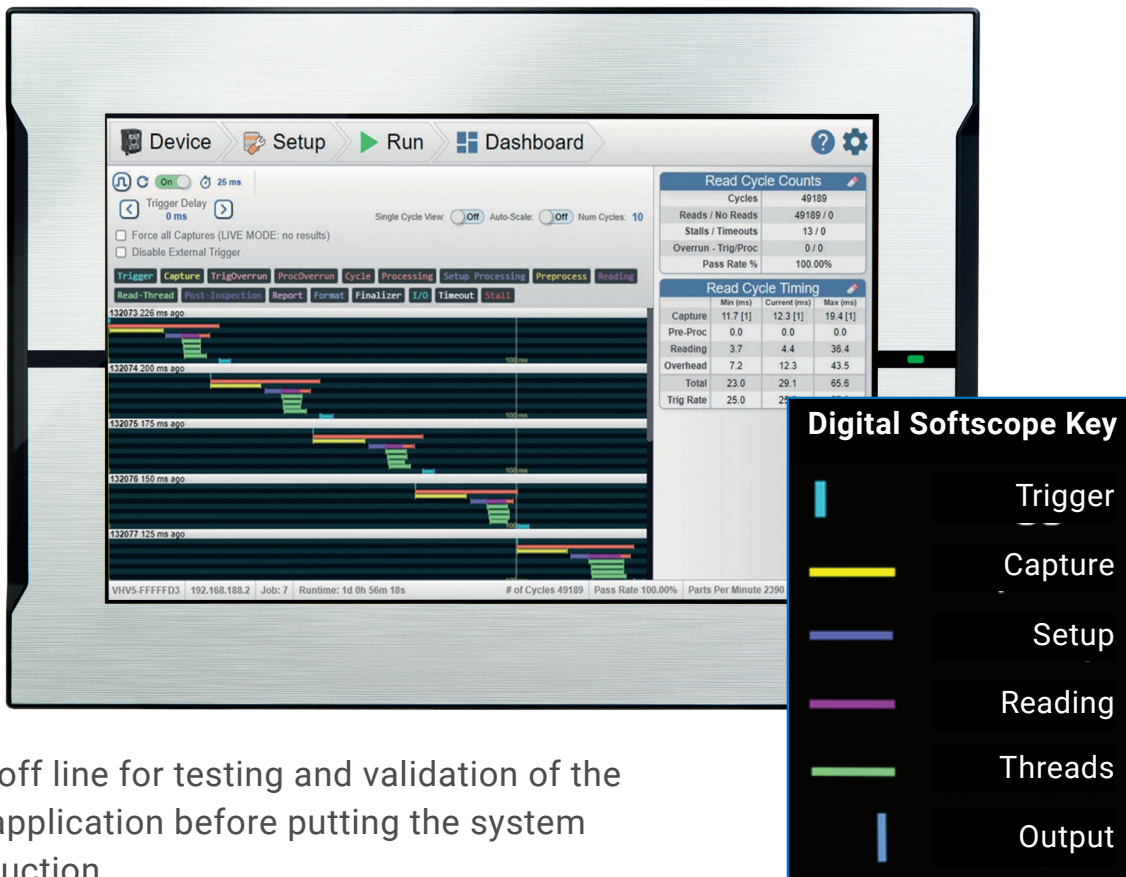
Read Cycle Timing			
	Min (ms)	Current (ms)	Max (ms)
Capture	11.1 [1]	12.1 [1]	12.1 [1]
Pre-Proc	0.0	0.0	0.0
Reading	3.3	3.6	7.6
Overhead	8.3	8.3	12.2
Total	23.5	24.0	28.1
Trig Rate	100.0	712.0	1.4s



Any Production Line

Digital Softscope for Performance Visualization and Optimization

- The Digital Softscope provides an oscilloscope view of the VHV5 while it is running. This allows the integrator to visualize key communication signals and timing data. It displays the Trigger Input, Image Acquisition, Read Processing, and finally Digital and Data Output with microsecond accuracy. This allows the user to:
- Validate the VHV5 handshaking with the controlling host system
- View and optimize the individual read cycle
- View and tune the trigger timing to achieve the maximum sustainable rate
- Visualize error conditions and processing bottlenecks dynamically as they occur



- Run this off line for testing and validation of the reading application before putting the system into production.
- Run this during to monitor for and to debug issues and anomalies

VHV5-F

Model Number Structure

Use the table below to determine the product specifications of your reader or verifier from the model number on the label.

Important: Please see the next section for the full list of orderable model numbers. All other variations should be assembled using standard models combined with available accessories.

VHV5-F – Autofocus Multicode Reader, IP69K Enclosure, 24V/PoE, Serial, Digital IO, Ethernet.


VHV5-F □□□□□□□□ - □□□□ - □
 1 2 3 4 5 6 7

No.	Classification	Code	Meaning
1	Focus Distance (mm)	000	Autofocus
2	Lens / Field of View	W	Wide
		M	Medium
		N	Narrow
		L	Long Range
3	Sensor Type	023M	2.3 Megapixel, Monochrome, Global Shutter
		050M	5 Megapixel, Monochrome, Global Shutter
4	Front Window Filter Type	S	Clear Front Window
		H	Half-Polarizing Window (Gives the user the option to use either polarized or standard lighting in the same unit)
5	Light Color	N	None
		R	Red
		W	White
6	License	X	High-Speed X-Mode Reader
		V	High-Speed X-Mode Reader and ISO In-Line Verifier
7	Custom (0 – Z)	D	Reserved

Ordering Information

Standard Orderable Reader and In-Line Verifier Models


Standard Red 2.3 MP Reader and Standard Red 5 MP Reader

Appearance	Standard Red 2.3 MP Reader	Part Number
	VHV5-F, Autofocus, Wide Lens, 2.3 MP, Standard Red Light, X-Mode Reader	VHV5-F000W023M-SRX
	VHV5-F, Autofocus, Medium Lens, 2.3 MP, Standard Red Light, X-Mode Reader	VHV5-F000M023M-SRX
	VHV5-F, Autofocus, Narrow Lens, 2.3 MP, Standard Red Light, X-Mode Reader	VHV5-F000N023M-SRX
	VHV5-F, Autofocus, Long Lens, 2.3 MP, Standard Red Light, X-Mode Reader	VHV5-F000L023M-SRX
	Standard Red 5 MP Reader	Part Number
	VHV5-F, Autofocus, Wide Lens, 5.0 MP, Standard Red Light, X-Mode Reader	VHV5-F000W050M-SRX
	VHV5-F, Autofocus, Medium Lens, 5.0 MP, Standard Red Light, X-Mode Reader	VHV5-F000M050M-SRX
	VHV5-F, Autofocus, Narrow Lens, 5.0 MP, Standard Red Light, X-Mode Reader	VHV5-F000N050M-SRX
	VHV5-F, Autofocus, Long Lens, 5.0 MP, Standard Red Light, X-Mode Reader	VHV5-F000L050M-SRX


Standard White 2.3 MP Reader and Standard White 5 MP Reader

Appearance	Standard White 2.3 MP Reader	Part Number
	VHV5-F, Autofocus, Wide Lens, 2.3 MP, Standard White Light, X-Mode Reader	VHV5-F000W023M-SWX
	VHV5-F, Autofocus, Medium Lens, 2.3 MP, Standard White Light, X-Mode Reader	VHV5-F000M023M-SWX
	VHV5-F, Autofocus, Narrow Lens, 2.3 MP, Standard White Light, X-Mode Reader	VHV5-F000N023M-SWX
	VHV5-F, Autofocus, Long Lens, 2.3 MP, Standard White Light, X-Mode Reader	VHV5-F000L023M-SWX
	Standard White 5 MP Reader	Part Number
	VHV5-F, Autofocus, Wide Lens, 5.0 MP, Standard White Light, X-Mode Reader	VHV5-F000W050M-SWX
	VHV5-F, Autofocus, Medium Lens, 5.0 MP, Standard White Light, X-Mode Reader	VHV5-F000M050M-SWX
	VHV5-F, Autofocus, Narrow Lens, 5.0 MP, Standard White Light, X-Mode Reader	VHV5-F000N050M-SWX
	VHV5-F, Autofocus, Long Lens, 5.0 MP, Standard White Light, X-Mode Reader	VHV5-F000L050M-SWX

Standard Red 2.3 MP Reader with Half Polarizer and Standard Red 5 MP Reader with Half Polarizer

Appearance	Standard Red 2.3 MP Reader with Half Polarizer	Part Number
	VHV5-F, Autofocus, Wide Lens, 2.3 MP, Standard Red Light, Half-Polarized Window, X-Mode Reader	VHV5-F000W023M-HRX
	VHV5-F, Autofocus, Medium Lens, 2.3 MP, Standard Red Light, Half-Polarized Window, X-Mode Reader	VHV5-F000M023M-HRX
	VHV5-F, Autofocus, Narrow Lens, 2.3 MP, Standard Red Light, Half-Polarized Window, X-Mode Reader	VHV5-F000N023M-HRX
	VHV5-F, Autofocus, Long Lens, 2.3 MP, Standard Red Light, Half-Polarized Window, X-Mode Reader	VHV5-F000L023M-HRX
	Standard Red 5 MP Reader with Half Polarizer	Part Number
	VHV5-F, Autofocus, Wide Lens, 5.0 MP, Standard Red Light, Half-Polarized Window, X-Mode Reader	VHV5-F000W050M-HRX
	VHV5-F, Autofocus, Medium Lens, 5.0 MP, Standard Red Light, Half-Polarized Window, X-Mode Reader	VHV5-F000M050M-HRX
	VHV5-F, Autofocus, Narrow Lens, 5.0 MP, Standard Red Light, Half-Polarized Window, X-Mode Reader	VHV5-F000N050M-HRX
	VHV5-F, Autofocus, Long Lens, 5.0 MP, Standard Red Light, Half-Polarized Window, X-Mode Reader	VHV5-F000L050M-HRX

Standard Red 2.3 MP In-Line Verifier and Standard Red 5 MP In-Line Verifier

Appearance	Standard Red 2.3 MP In-Line Verifier	Part Number
	VHV5-F, Autofocus, Medium Lens, 2.3 MP, Standard Red Light, In-Line Verifier	VHV5-F000M023M-SRV
	VHV5-F, Autofocus, Narrow Lens, 2.3 MP, Standard Red Light, In-Line Verifier	VHV5-F000N023M-SRV
	VHV5-F, Autofocus, Long Lens, 2.3 MP, Standard Red Light, In-Line Verifier	VHV5-F000L023M-SRV
	Standard Red 5 MP In-Line Verifier	Part Number
	VHV5-F, Autofocus, Medium Lens, 5.0 MP, Standard Red Light, In-Line Verifier	VHV5-F000M050M-SRV
	VHV5-F, Autofocus, Narrow Lens, 5.0 MP, Standard Red Light, In-Line Verifier	VHV5-F000N050M-SRV
	VHV5-F, Autofocus, Long Lens, 5.0 MP, Standard Red Light, In-Line Verifier	VHV5-F000L050M-SRV

Note 1: VHV5-F readers are sold without cables or mounting. These items can be found in later sections.

Note 2: The VHV5-F uses the same Parallel IO cables and interconnect accessories as the MicroHAWK V430-F and V440-F.

Note 3: X-Mode is suitable for all labels as well as low-print-grade codes and DPM.

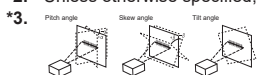
Note 4: The wide lens is not recommended for in-line verification.

Ratings and Specifications

VHV5-F			
Model		VHV5-F□□□□ 023M-□□□□	VHV5-F□□□□ 050M-□□□□
Image Sensor	Resolution	2.3 MP - 1920 (H) x 1200 (V)	5.0 MP - 2472 (H) x 2048 (V)
	Pixel Size	3 μm	2.74 μm
	Color / Monochrome	Monochrome CMOS	
	Shutter	Global Shutter	
	Frames per Second	80 FPS	40 FPS
	Exposure	16 μs to 300,000 μs	50 μs to 300,000 μs (16 μs to 300,000 μs with strobe duration)
	Lens Selections	Focal Length: Medium = 8.5 mm, Narrow = 12.5 mm, Long = 20 mm	
Symbologies *1	1D Symbologies	Code 39, Code 128, BC412, Interleaved 2 of 5, UPC/EAN, Codabar, Code 93, Pharmacoce, PLANET, POSTNET, Japanese Post, Australian Post, Royal Mail, Intelligent Mail, KIX	
	2D Symbologies	Data Matrix (ECC 0-200), QR Code, Micro QR Code, Aztec Code, DotCode	
	Stacked Symbologies	PDF417, MicroPDF417, GS1 Databar (Composite and Stacked)	
ISO Code Validation	Data Matrix, QR Codes, 1D Symbologies	Models without Verification License: Code Quality Validation only using ISO 15416, ISO 15415, and ISO 29158 Models with Verification License: Fully Calibrated ISO Code Quality Verification using ISO 15416, ISO 15415, and ISO 29158	
Reading Performance *2	Number of Reading Digits	No upper limit (depends on bar width and reading distance)	
	Targeting Optics	Two green parallel LED spots	
	Illumination	8 high-power LEDs: White (6,500K) or Red (Wavelength: 625 nm)	
	Reading Distance / Field of View	Refer to Read Ranges section for details based on Lens and Sensor Type.	
	Pitch Angle (α) *3	±30°	
	Skew Angle (β) *3	±30°	
	Tilt Angle (γ) *3	±180°	
Trigger		External Trigger (Edge or Level), Serial Trigger (Ethernet, RS-232C), PLC	
Digital I/O Specifications	Input Signals	3 Fully Configurable Inputs: IN1 (Trigger by Default), IN2, IN3. Bi-directional, Optoisolated, 4.5-28V-rated (10 mA @ 28 VDC).	
	Output Signals	3 Fully Configurable Outputs: OUT1, OUT2, OUT3 (Strobe Optional). Bi-directional, Optoisolated, 3-28V rated, (I _{CE} < 100 mA at 24 VDC, current limited by user).	
	External Strobe	24V, GND, Strobe+ (> 1.5kΩ, user-implemented), Strobe- (> 1.5kΩ, user-implemented), Analog Intensity Control (0-10V). (Strobe Trigger can operate as NPN or PNP).	
Communication	Connectivity	RS-232C, Ethernet TCP/IP, EtherNet/IP™, PROFINET	
	Ethernet Specifications	1000BASE-T	
Image Logging	Image Logging Type	To RAM	
Indicator LEDs	Membrane Switch	PWR (Green), LINK (Amber), MODE/STATUS (Amber), TRIGGER (Amber), PASS (Green), FAIL (Red)	
	360° Indicators	PASS (Green), FAIL (Red)	
Power Supply Voltage		Power over Ethernet (IEEE 802.3at) / 24 VDC +/- 10%	
Current Consumption		PoE+: 44-57 VDC @ 0.6 A (Max.); Direct: 24 VDC @ 2.1 A (Max.); External Light Port Connector: 24 VDC @ 1.5 A (Max) (Internally Current-Limited)	
Environmental / Immunity	Ambient Temperature Range	Operating: 0 to 45° C; Storage: -25 to 65° C (with no icing or condensation)	
	Ambient Humidity Range	Operating and Storage: 25% to 85% (with no condensation)	
	Ambient Atmosphere	No Corrosive Gases	
	Vibration Resistance (Destructive)	Oscillation Frequency: 10 to 150 Hz; Half Amplitude: 0.35 mm; Vibration Direction: X/Y/Z; Sweep Time: 8 Minutes/Count; Sweep Count: 10 Times	
	Shock Resistance (Destructive)	Impact Force: 150 m/s ² , Test Direction: 6 Directions, 3 Times Each (Up / Down, Front / Behind, Left / Right)	
	Degree of Protection	IEC 60529 IP69K	
Weight	Main Body Only	372 g	
	Packaged Weight	505 g	
Dimensions	Main Body Dimensions	57.5 mm (W) × 50.5 mm (D) × 75 mm (H) (89 mm height with connectors)	
	Packaging Dimensions	170 mm (W) × 117 mm (D) × 86 mm (H)	
Accessories		ReadMeFirst, CE Compliance Sheet	
Safety Standards		IEC/EN 62368-1, 2nd and 3rd Ed UL 60950-1, 2nd Edition, 2019-05-09 (Information Technology Equipment - Safety - Part 1: General Requirements) CAN/CSA C22.2 No. 60950-1-07, 2nd Edition, 2014-10 (Information Technology Equipment - Safety - Part 1: General Requirements) FCC, UL, CE, UKCA, RCM, KC *4	
Materials	Case	Aluminum, black anodized	
	Reading Window	Acrylic	
Software		WebLink	

*1. Symbologies are supported based on Omron's read capability validation standard. Omron recommends that validation be performed for each application.

*2. Unless otherwise specified, reading performance is defined with center of field of view, angle R = ∞.



*4. FCC = United States
UL = United States
CE = European Union
UKCA = Great Britain (England / Wales / Scotland)
RCM = Australia / New Zealand
KC = South Korea

Note: Do not use this document to operate the Unit.

OMRON Corporation Industrial Automation Company

Kyoto, JAPAN

Contact : www.ia.omron.com

Regional Headquarters

OMRON EUROPE B.V.

Wegalaan 67-69, 2132 JD Hoofddorp
The Netherlands
Tel: (31) 2356-81-300 Fax: (31) 2356-81-388

OMRON ELECTRONICS LLC

2895 Greenspoint Parkway, Suite 200
Hoffman Estates, IL 60169 U.S.A.
Tel: (1) 847-843-7900 Fax: (1) 847-843-7787

OMRON ASIA PACIFIC PTE. LTD.

438B Alexandra Road, #08-01/02 Alexandra
Technopark, Singapore 119968
Tel: (65) 6835-3011 Fax: (65) 6835-3011

OMRON (CHINA) CO., LTD.

Room 2211, Bank of China Tower,
200 Yin Cheng Zhong Road,
PuDong New Area, Shanghai, 200120, China
Tel: (86) 21-6023-0333 Fax: (86) 21-5037-2388

Authorized Distributor:

©OMRON Corporation 2025-2026 All Rights Reserved.
In the interest of product improvement,
specifications are subject to change without notice.

CSM_2_1

Cat. No. Q358-E-02 0626 (0625)